

schedule 4 mapping



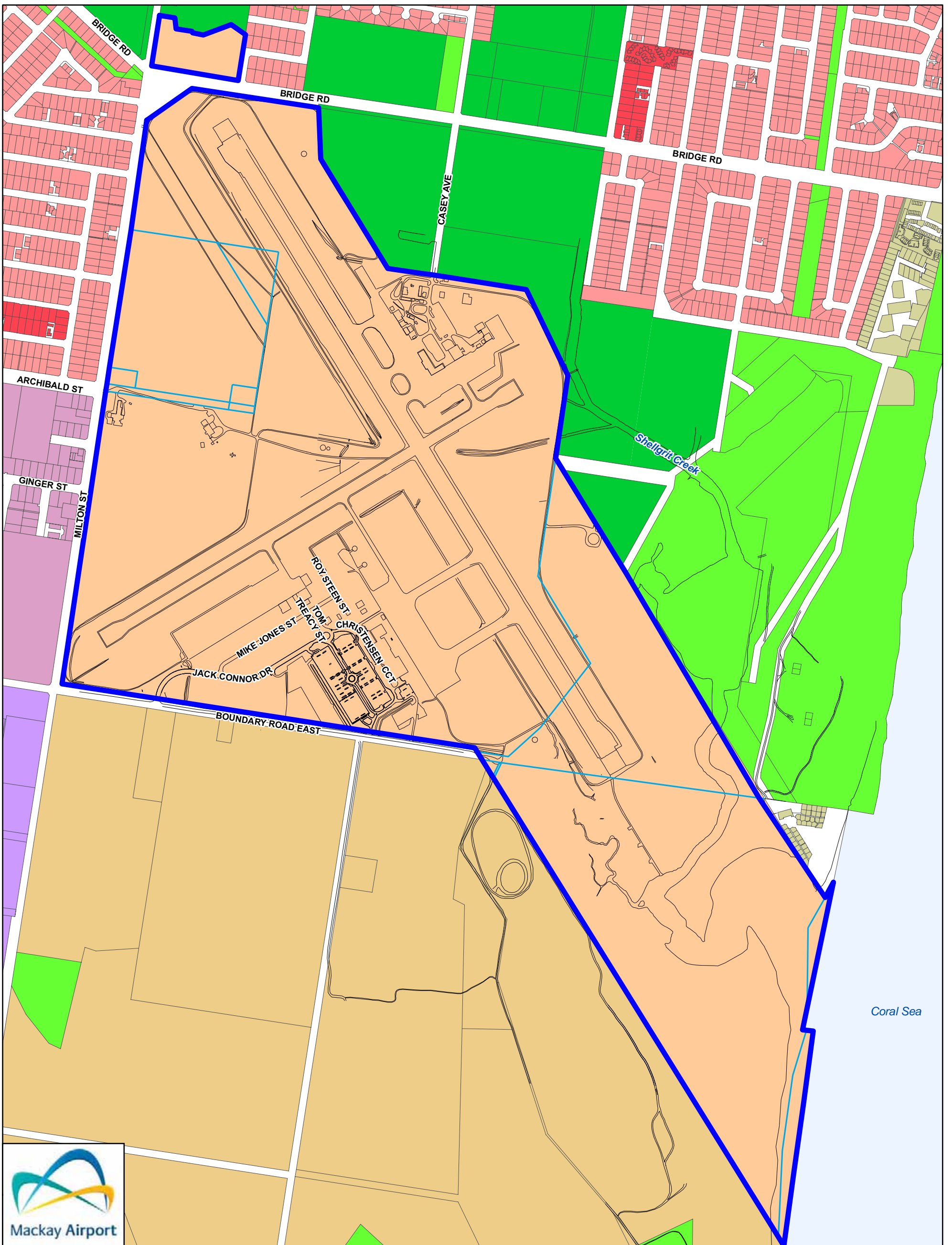
MAPPING DISCLAIMER:

As indicated on the relevant maps in this schedule, the data has been sourced from the Department of Environment and Resource Management (DERM) from large scale orthographic, satellite imagery and the like. They have not been ground-truthed by MAPL to be airport specific.

It is noted the airport does not have the administrative power to amend the DERM mapping set; to do so would not reflect the correct legal position and purpose of the State mapping and subsequent referral triggers pursuant to the Planning Act.

It is possible that this mapping may be amended following the State Interest review of the Draft LUP following this public consultation phase.

Map 1.1	Mackay Airport Locality
Map 1.2	Mackay Regional Council Planning Scheme Extract
Map 1.3	DEO – Strategic Acquisitions
Map 3.1	Zone and Precinct Plan
Map 5.5	Structure Height Overlay
Map 5.5(A)	Airport Protection Overlay (ANEF 2005)
Map 5.5(B)	Airport Protection Overlay (Navigational Aides)
Map 5.6	Potential Acid Sulfate Soils Overlay
Map 5.7(A)	Coastal Protection Overlay
Map 5.7(B)	Ecological Values Overlay
Map 5.7(C)	Ecological Values Overlay
Map 5.8	Flood/ Inundation Overlay
Map 5.10	GBR Wetlands Overlay



Maps have been prepared by Mackay Regional Council for Mackay Airport Pty Ltd. This map is and shall remain the property of Mackay Airport Pty Ltd. Using or copying this map or any part of it without specific authorization is absolutely prohibited.

While every care is taken to ensure the accuracy of this product Mackay Airport Pty Ltd makes no representations or warranties about the accuracy, reliability, completeness or suitability for any particular purpose and disclaims all responsibility and all liability (including without limitation, liability in negligence) or all expenses, losses, damages (including indirect or consequential damage) and costs you may incur as a result of this product being inaccurate or incomplete in any way or for any reason.

© Copyright Mackay Airport Pty Ltd 2010

Planning Scheme Zones

- High Density Residential
- Industry-High Impact
- Industry-Low Impact
- Open Space

Cadastre

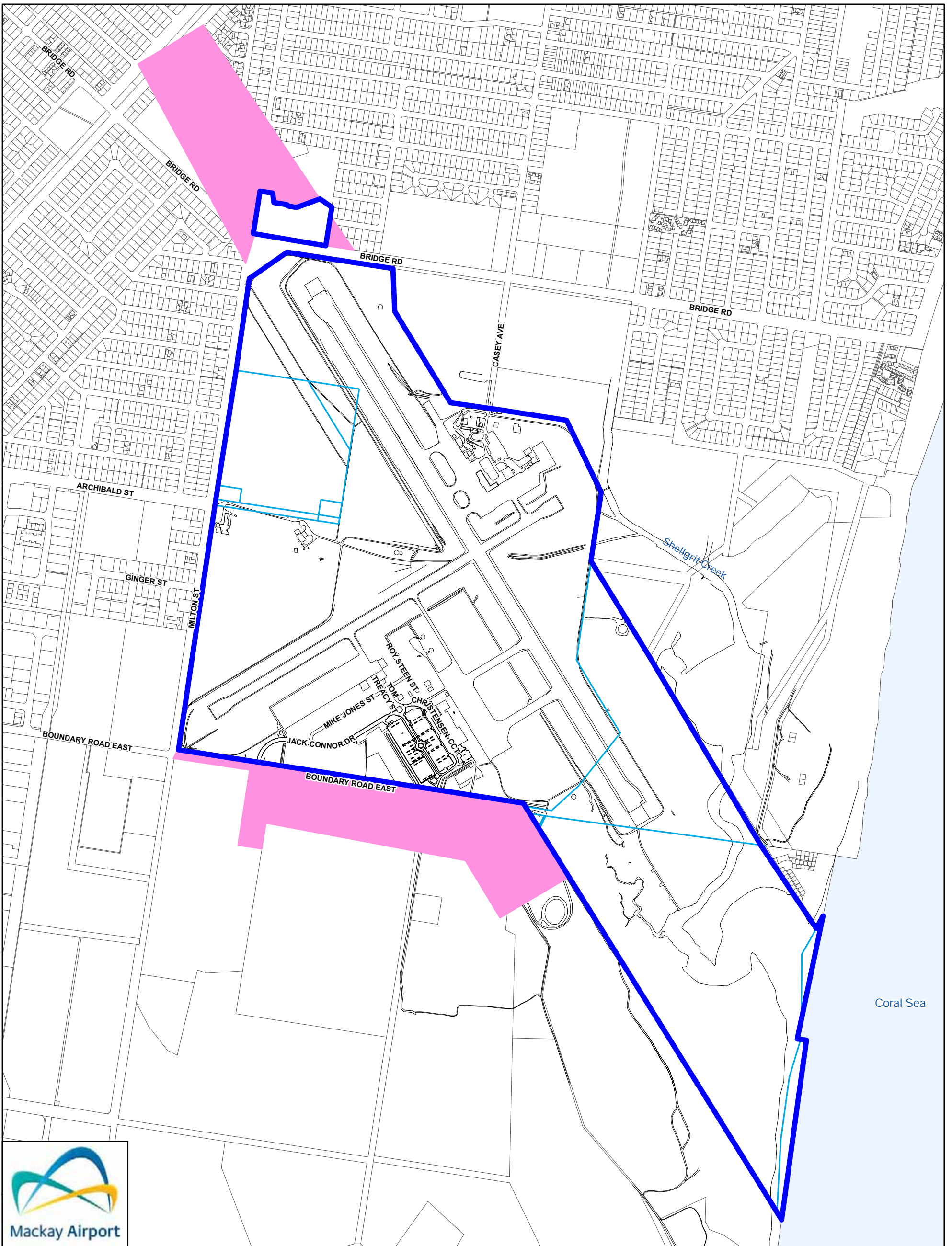
- Airport Boundary
- Airport Lots

- Other - Community Purposes
- Rural
- Special Activities - Tourism
- Sport and Recreation
- Urban Residential

Note: Mackay Regional Council - Zone Maps - gazetted March 2006 (included for information only - refer source data)

DATE: 03/11/2010	DATUM: Geocentric Datum of Australia 1994 (GDA94) (Zone 55)	N ↑
SCALE: Approx Scale @ A4 1:15,000		

**MACKAY AIRPORT
LAND USE PLAN 2010**
MACKAY REGIONAL COUNCIL
PLANNING SCHEME EXTRACT
MAP 1.2



Maps have been prepared by Mackay Regional Council for Mackay Airport Pty Ltd. This map is and shall remain the property of Mackay Airport Pty Ltd. Using or copying this map or any part of it without specific authorization is absolutely prohibited.

While every care is taken to ensure the accuracy of this product Mackay Airport Pty Ltd makes no representations or warranties about the accuracy, reliability, completeness or suitability for any particular purpose and disclaims all responsibility and all liability (including without limitation, liability in negligence) or all expenses, losses, damages (including indirect or consequential damage) and costs you may incur as a result of this product being inaccurate or incomplete in any way or for any reason.

© Copyright Mackay Airport Pty Ltd 2010

Cadastre

- Airport Boundary
- Airport Lots
- Strategic Acquisitions

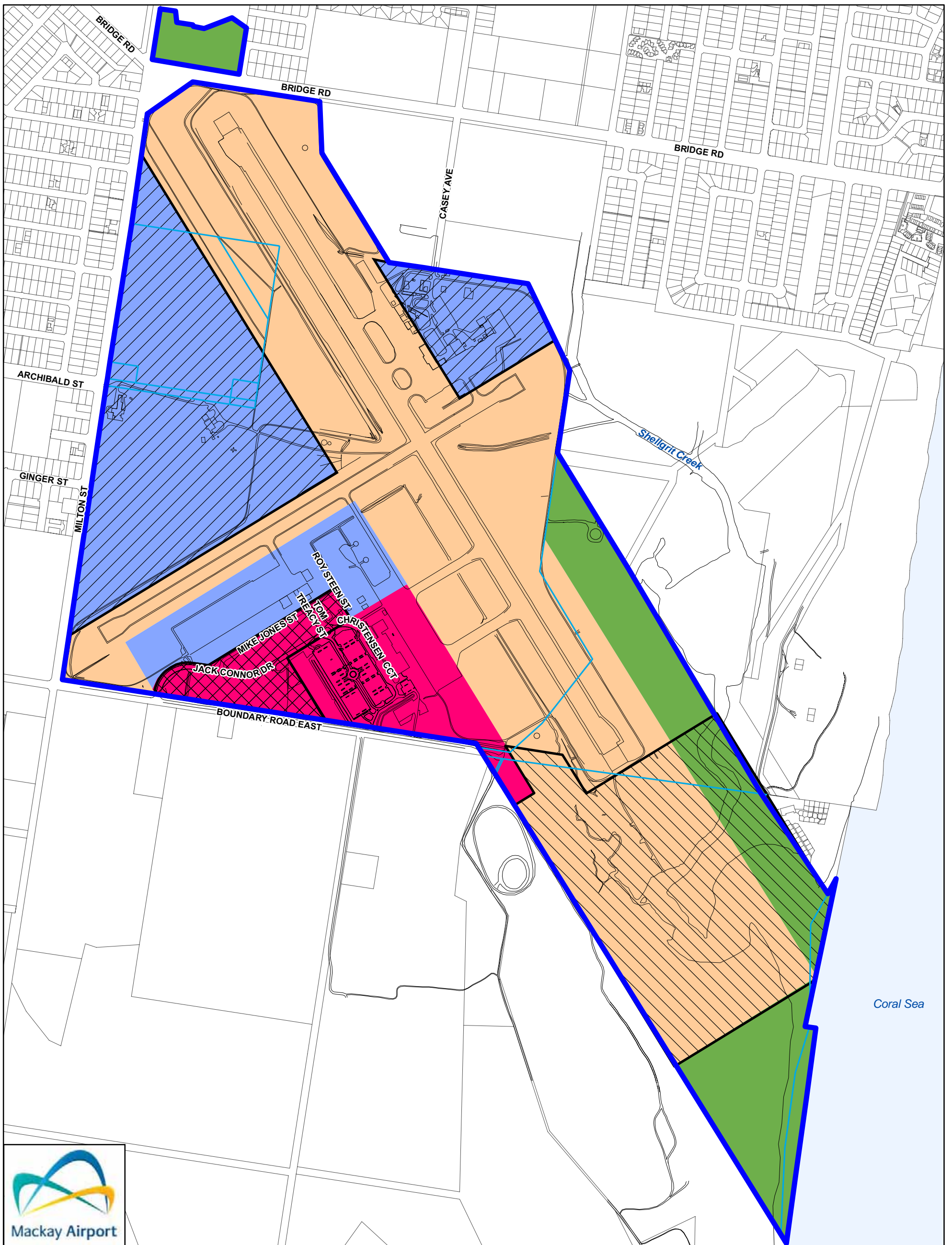
DATE: 12/11/2010

DATUM: Geocentric Datum of Australia 1994 (GDA94) (Zone 55)



SCALE: Approx Scale @ A4 1:17,000
 0 250 500 1,000 Metres

MACKAY AIRPORT
LAND USE PLAN 2010
 DEO - STRATEGIC ACQUISITIONS
 Map 1.3



Maps have been prepared by Mackay Regional Council for Mackay Airport Pty Ltd. This map is and shall remain the property of Mackay Airport Pty Ltd. Using or copying this map or any part of it without specific authorization is absolutely prohibited.

While every care is taken to ensure the accuracy of this product Mackay Airport Pty Ltd makes no representations or warranties about the accuracy, reliability, completeness or suitability for any particular purpose and disclaims all responsibility and all liability (including without limitation, liability in negligence) or all expenses, losses, damages (including indirect or consequential damage) and costs you may incur as a result of this product being inaccurate or incomplete in any way or for any reason.

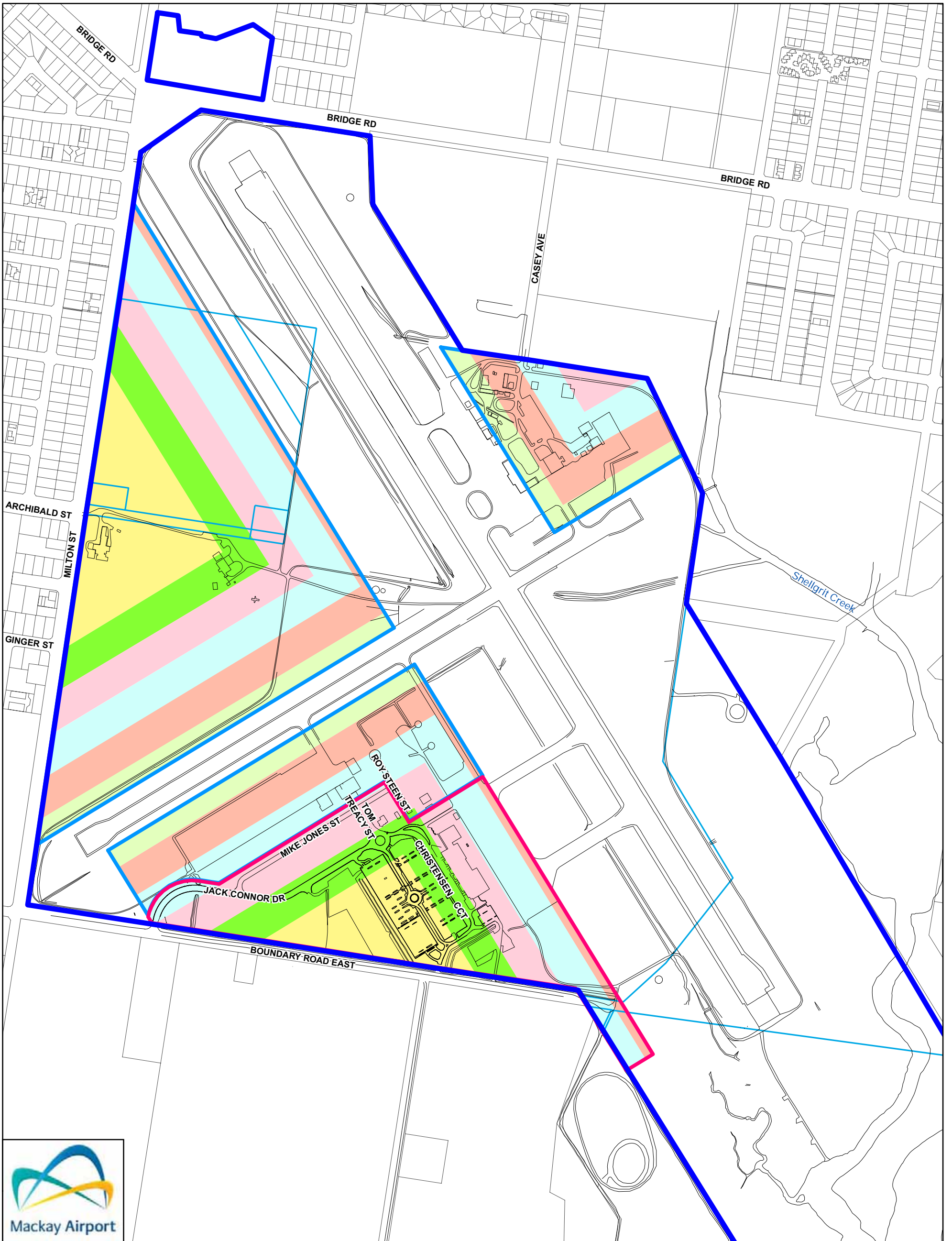
© Copyright Mackay Airport Pty Ltd 2010

- Airport Zones**
- Movement Zone
 - Terminal Business Zone
 - Mixed Aviation Zone
 - Green Space Zone

- Cadastre**
- Airport Boundary
 - Airport Lots

- Precincts**
- Airport Central Precinct
 - Movement Expansion Precinct
 - Commercial Precinct

DATE: 03/11/2010	DATUM: Geocentric Datum of Australia 1994 (GDA94) (Zone 55)	N
SCALE: Approx Scale @ A4 1:15,000		
<p>MACKAY AIRPORT LAND USE PLAN 2010</p> <p>ZONE AND PRECINCT PLAN MAP 3.1</p>		



Maps have been prepared by Mackay Regional Council for Mackay Airport Pty Ltd. This map is and shall remain the property of Mackay Airport Pty Ltd. Using or copying this map or any part of it without specific authorization is absolutely prohibited.

While every care is taken to ensure the accuracy of this product Mackay Airport Pty Ltd makes no representations or warranties about the accuracy, reliability, completeness or suitability for any particular purpose and disclaims all responsibility and all liability (including without limitation, liability in negligence) or all expenses, losses, damages (including indirect or consequential damage) and costs you may incur as a result of this product being inaccurate or incomplete in any way or for any reason.

© Copyright Mackay Airport Pty Ltd 2010

Obstacle Limitation Surfaces

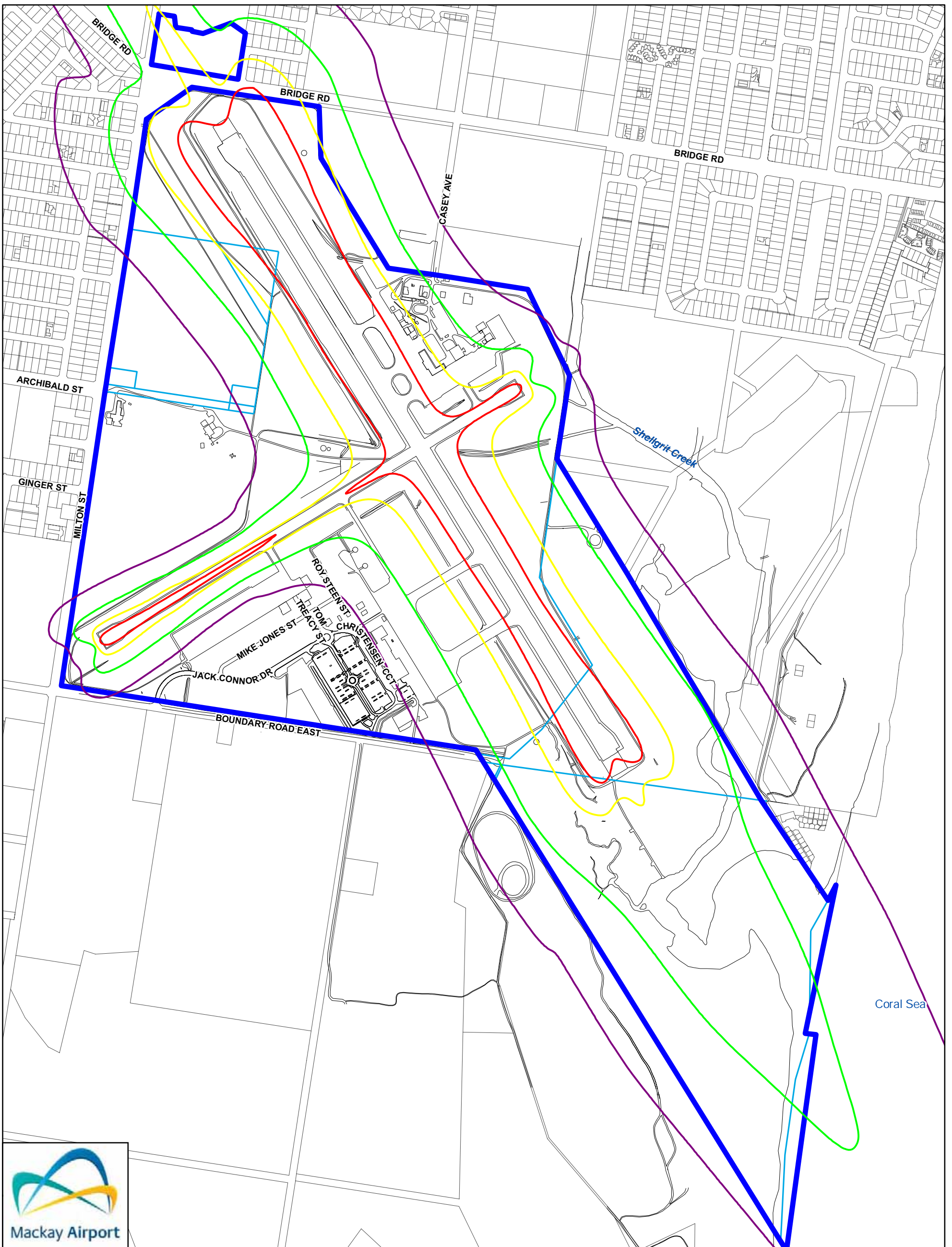
- Terminal Business Zone
- Mixed Aviation Zone
- Structures 4.3 - 10M AHD
- Structures 10 - 20M AHD
- Structures 20 - 30M AHD
- Structures 30 - 40M AHD
- Structures 40 - 49M AHD
- Structures 49M MAX. AHD

Notes: Mackay Airport Pty Ltd dataset
 RWY 14-32 OLS Based on 300m Runway Strip
 RWY 05-23 OLS Based on 90m Runway Strip

Cadastre

- Airport Boundary
- Airport Lots

DATE: 03/11/2010	DATUM: Geocentric Datum of Australia 1994 (GDA94) (Zone 55)	N ↑
SCALE: Approx Scale @ A4 1:15,000		
<p>MACKAY AIRPORT LAND USE PLAN 2010 STRUCTURE HEIGHT OVERLAY MAP 5.5</p>		



Maps have been prepared by Mackay Regional Council for Mackay Airport Pty Ltd. This map is and shall remain the property of Mackay Airport Pty Ltd. Using or copying this map or any part of it without specific authorization is absolutely prohibited.

While every care is taken to ensure the accuracy of this product Mackay Airport Pty Ltd makes no representations or warranties about the accuracy, reliability, completeness or suitability for any particular purpose and disclaims all responsibility and all liability (including without limitation, liability in negligence) or all expenses, losses, damages (including indirect or consequential damage) and costs you may incur as a result of this product being inaccurate or incomplete in any way or for any reason.

© Copyright Mackay Airport Pty Ltd 2010

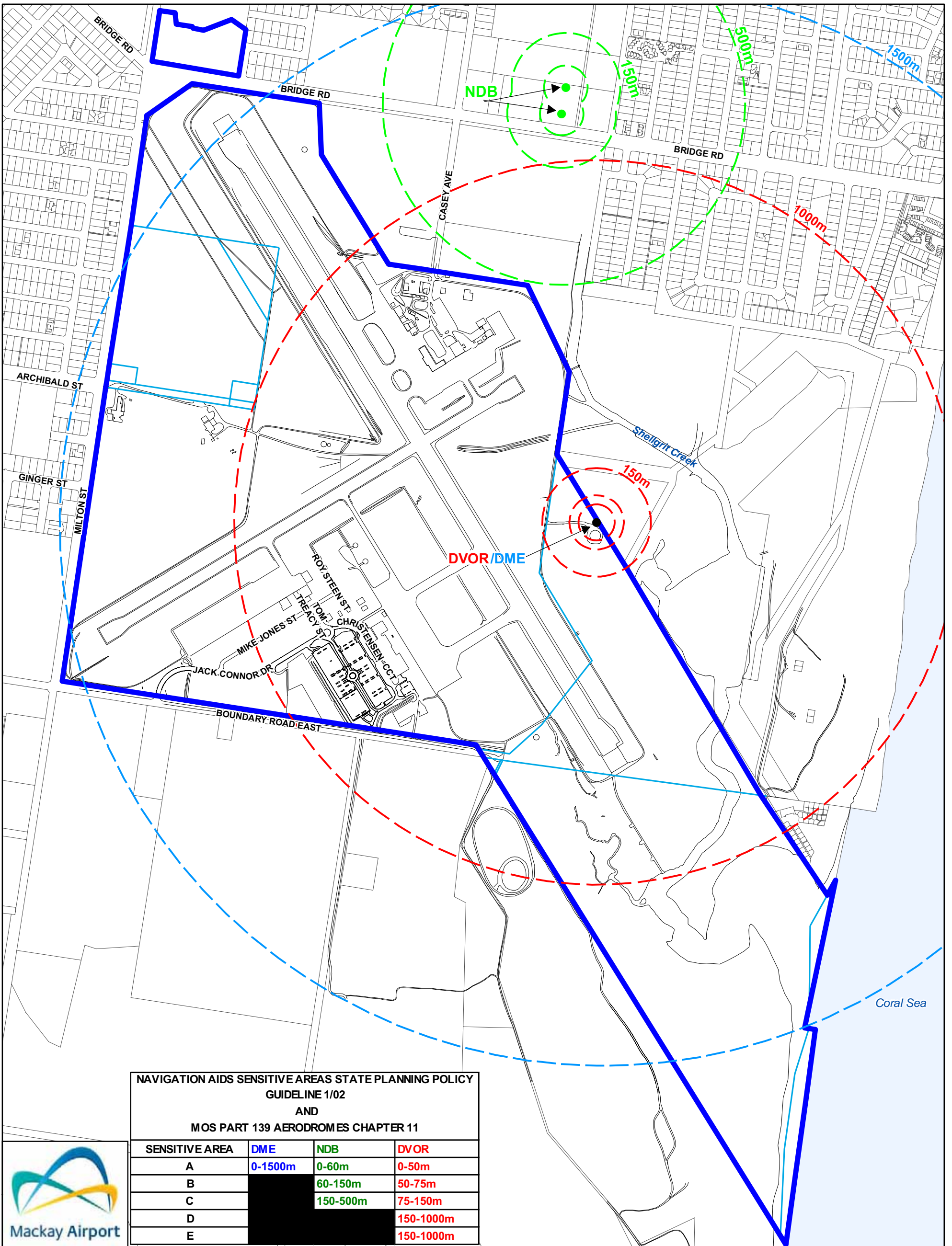
Airport Noise Exposure Forecast Note: Mackay Airport Pty Ltd dataset

- 20 ANEF
- 25 ANEF
- 30 ANEF
- 35 ANEF

Cadastre

- Airport Boundary
- Airport Lots

DATE: 12/11/2010	DATUM: Geocentric Datum of Australia 1994 (GDA94) (Zone 55)	N
SCALE: Approx Scale @ A4 1:15,000		
0 250 500 1,000 Metres		
MACKAY AIRPORT LAND USE PLAN 2010 AIRPORT PROTECTION OVERLAY (ANEF 2005) MAP 5.5 (A)		



**NAVIGATION AIDS SENSITIVE AREAS STATE PLANNING POLICY
GUIDELINE 1/02
AND
MOS PART 139 AERODROMES CHAPTER 11**

SENSITIVE AREA	DME	NDB	DVOR
A	0-1500m	0-60m	0-50m
B		60-150m	50-75m
C		150-500m	75-150m
D			150-1000m
E			150-1000m



Maps have been prepared by Mackay Regional Council for Mackay Airport Pty Ltd. This map is and shall remain the property of Mackay Airport Pty Ltd. Using or copying this map or any part of it without specific authorization is absolutely prohibited.

While every care is taken to ensure the accuracy of this product Mackay Airport Pty Ltd makes no representations or warranties about the accuracy, reliability, completeness or suitability for any particular purpose and disclaims all responsibility and all liability (including without limitation, liability in negligence) or all expenses, losses, damages (including indirect or consequential damage) and costs you may incur as a result of this product being inaccurate or incomplete in any way or for any reason.

© Copyright Mackay Airport Pty Ltd 2010

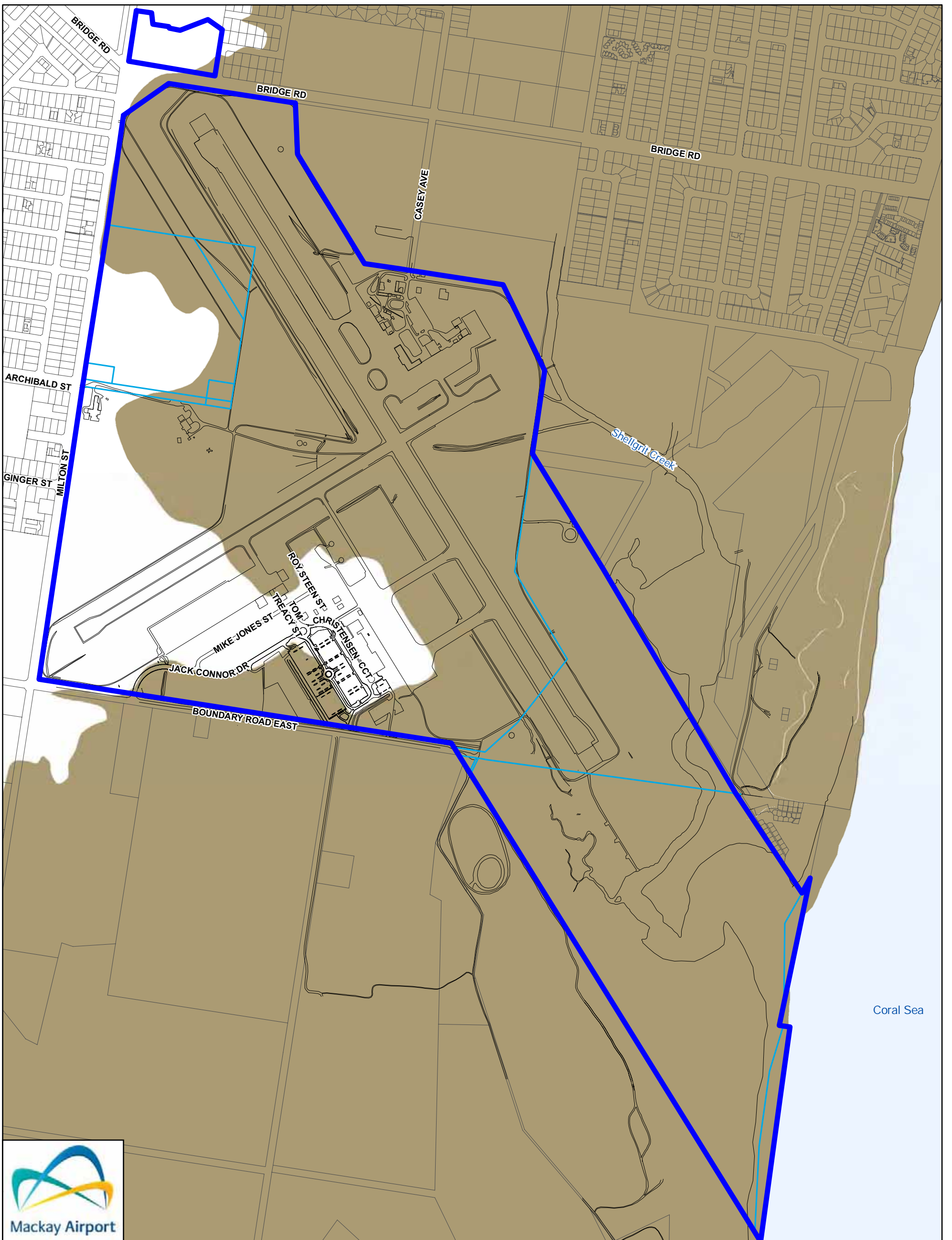
Cadastre

- Airport Boundary
- Airport Lots

Note: Mackay Airport Pty Ltd dataset.

DATE: 12/11/2010	DATUM: Geocentric Datum of Australia 1994 (GDA94) (Zone 55)	N ↑
SCALE: Approx Scale @ A4 1:15,000		
0	250	500
1,000		
Metres		

**MACKAY AIRPORT
LAND USE PLAN 2010
AIRPORT PROTECTION
OVERLAY (NAVIGATIONAL AIDS)
MAP 5.5 (B)**



Maps have been prepared by Mackay Regional Council for Mackay Airport Pty Ltd. This map is and shall remain the property of Mackay Airport Pty Ltd. Using or copying this map or any part of it without specific authorization is absolutely prohibited.

While every care is taken to ensure the accuracy of this product Mackay Airport Pty Ltd makes no representations or warranties about the accuracy, reliability, completeness or suitability for any particular purpose and disclaims all responsibility and all liability (including without limitation, liability in negligence) or all expenses, losses, damages (including indirect or consequential damage) and costs you may incur as a result of this product being inaccurate or incomplete in any way or for any reason.

© Copyright Mackay Airport Pty Ltd 2010

Development constraint area

■ Potential Acid Sulfate Soils

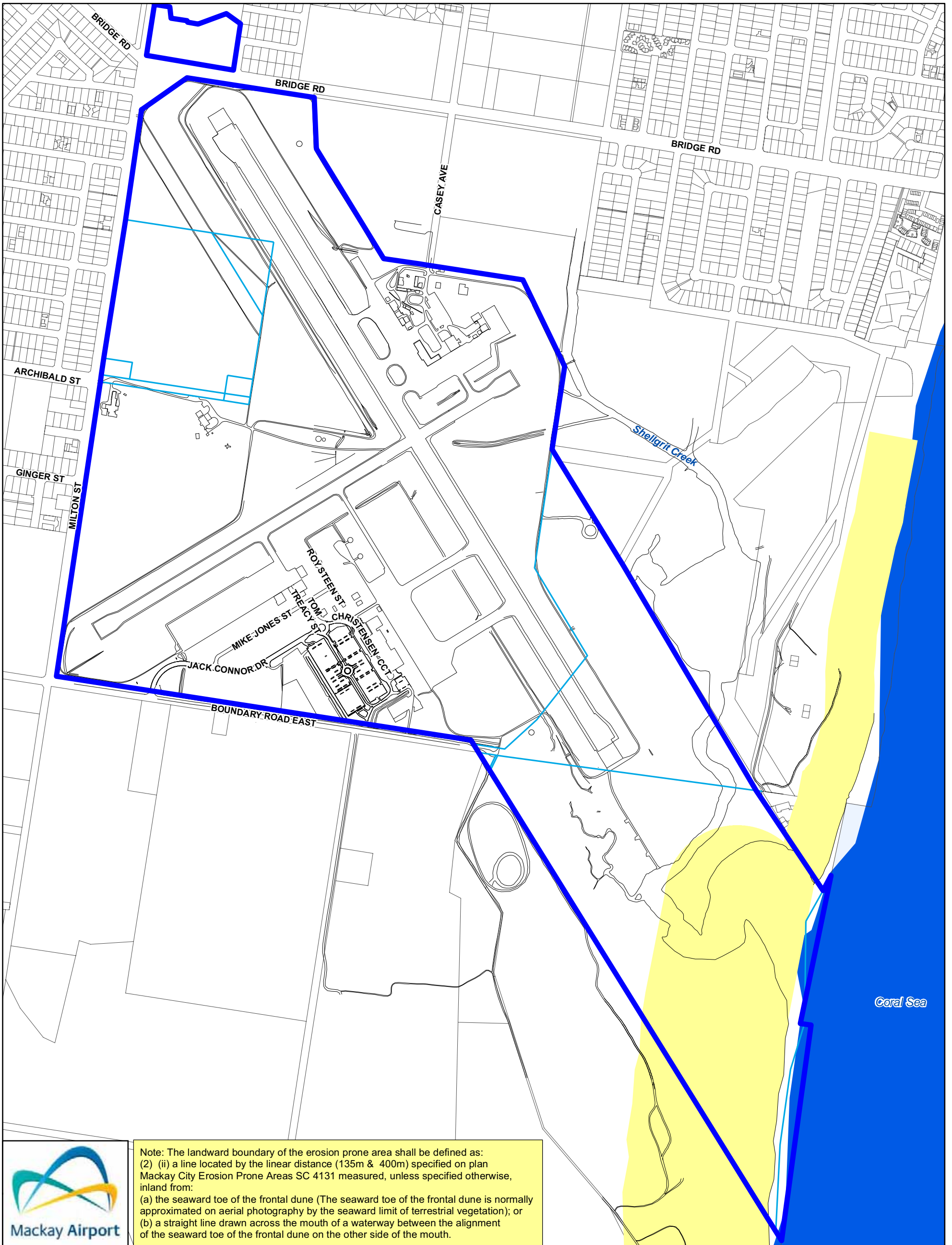
Potential Acid Sulfate Soil data was supplied by Mackay Regional Council and DERM.

Cadastre

— Airport Boundary
 — Airport Lots

DATE: 03/11/2010	DATUM: Geocentric Datum of Australia 1994 (GDA94) (Zone 55)	N ↑
SCALE: Approx Scale @ A4 1:15,000		
0 250 500 1,000 Metres		

**MACKAY AIRPORT
 LAND USE PLAN 2010
 POTENTIAL ACID SULFATE
 SOILS OVERLAY
 MAP 5.6**



Note: The landward boundary of the erosion prone area shall be defined as:
 (2) (ii) a line located by the linear distance (135m & 400m) specified on plan Mackay City Erosion Prone Areas SC 4131 measured, unless specified otherwise, inland from:
 (a) the seaward toe of the frontal dune (The seaward toe of the frontal dune is normally approximated on aerial photography by the seaward limit of terrestrial vegetation); or
 (b) a straight line drawn across the mouth of a waterway between the alignment of the seaward toe of the frontal dune on the other side of the mouth.

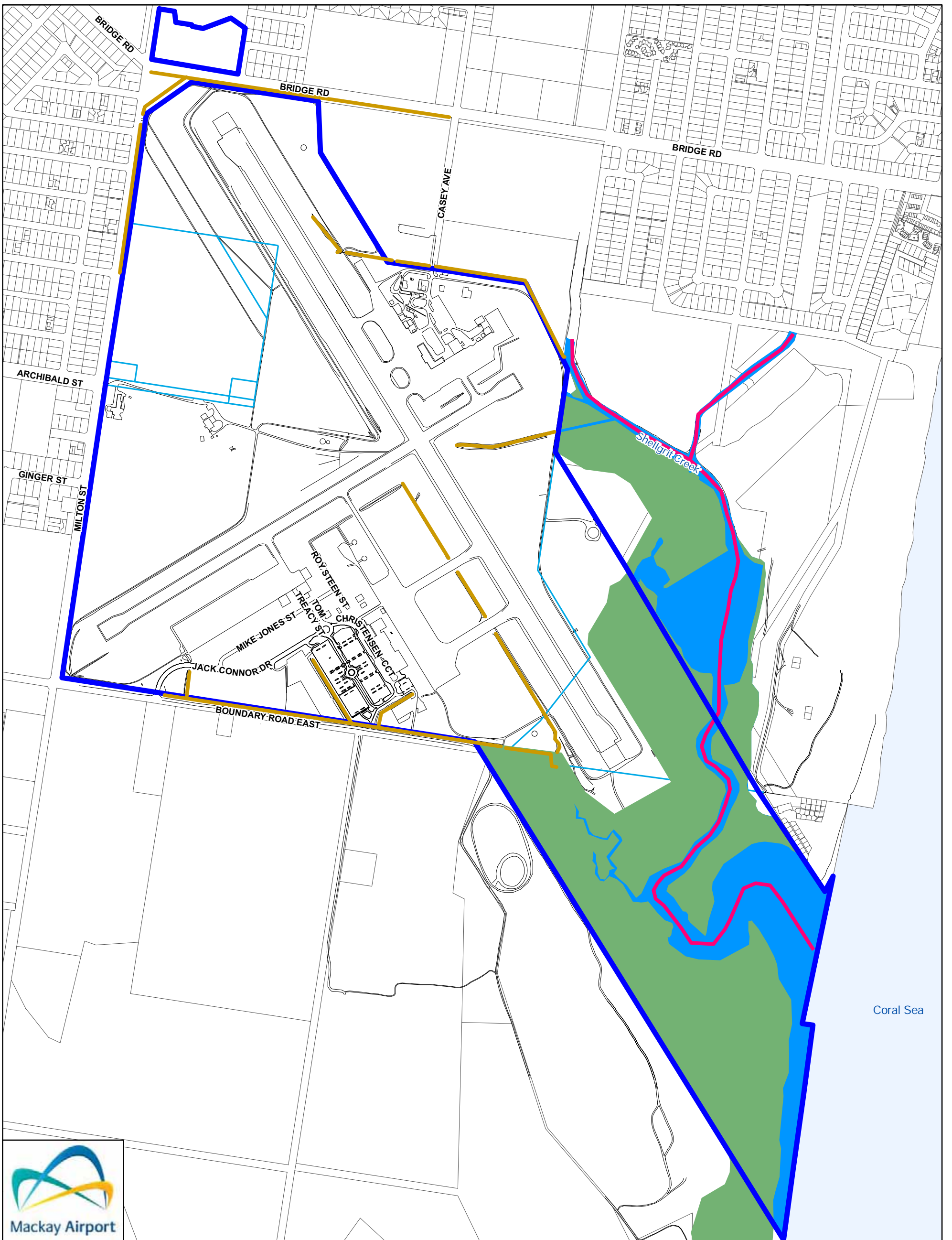
Maps have been prepared by Mackay Regional Council for Mackay Airport Pty Ltd. This map is and shall remain the property of Mackay Airport Pty Ltd. Using or copying this map or any part of it without specific authorization is absolutely prohibited.

While every care is taken to ensure the accuracy of this product Mackay Airport Pty Ltd makes no representations or warranties about the accuracy, reliability, completeness or suitability for any particular purpose and disclaims all responsibility and all liability (including without limitation, liability in negligence) or all expenses, losses, damages (including indirect or consequential damage) and costs you may incur as a result of this product being inaccurate or incomplete in any way or for any reason.

© Copyright Mackay Airport Pty Ltd 2010

- Legend**
- Erosion Prone Area
 - Great Barrier Reef Marine Park
- Data supplied by DERM from the Great Barrier Reef Marine Park Authority (GBRMP boundary, March 2008).
- Cadastre**
- Airport Boundary
 - Airport Lots

DATE: 03/11/2010	DATUM: Geocentric Datum of Australia 1994 (GDA94) (Zone 55)	N ↑
SCALE: Approx Scale @ A4 1:15,000		
<p>MACKAY AIRPORT LAND USE PLAN 2010 COASTAL PROTECTION OVERLAY MAP 5.7(A)</p>		



Maps have been prepared by Mackay Regional Council for Mackay Airport Pty Ltd. This map is and shall remain the property of Mackay Airport Pty Ltd. Using or copying this map or any part of it without specific authorization is absolutely prohibited.

While every care is taken to ensure the accuracy of this product Mackay Airport Pty Ltd makes no representations or warranties about the accuracy, reliability, completeness or suitability for any particular purpose and disclaims all responsibility and all liability (including without limitation, liability in negligence) or all expenses, losses, damages (including indirect or consequential damage) and costs you may incur as a result of this product being inaccurate or incomplete in any way or for any reason.

© Copyright Mackay Airport Pty Ltd 2010

Legend

- Man Made Waterway
- Riparian Corridor
- Fauna Corridor
- Waterway

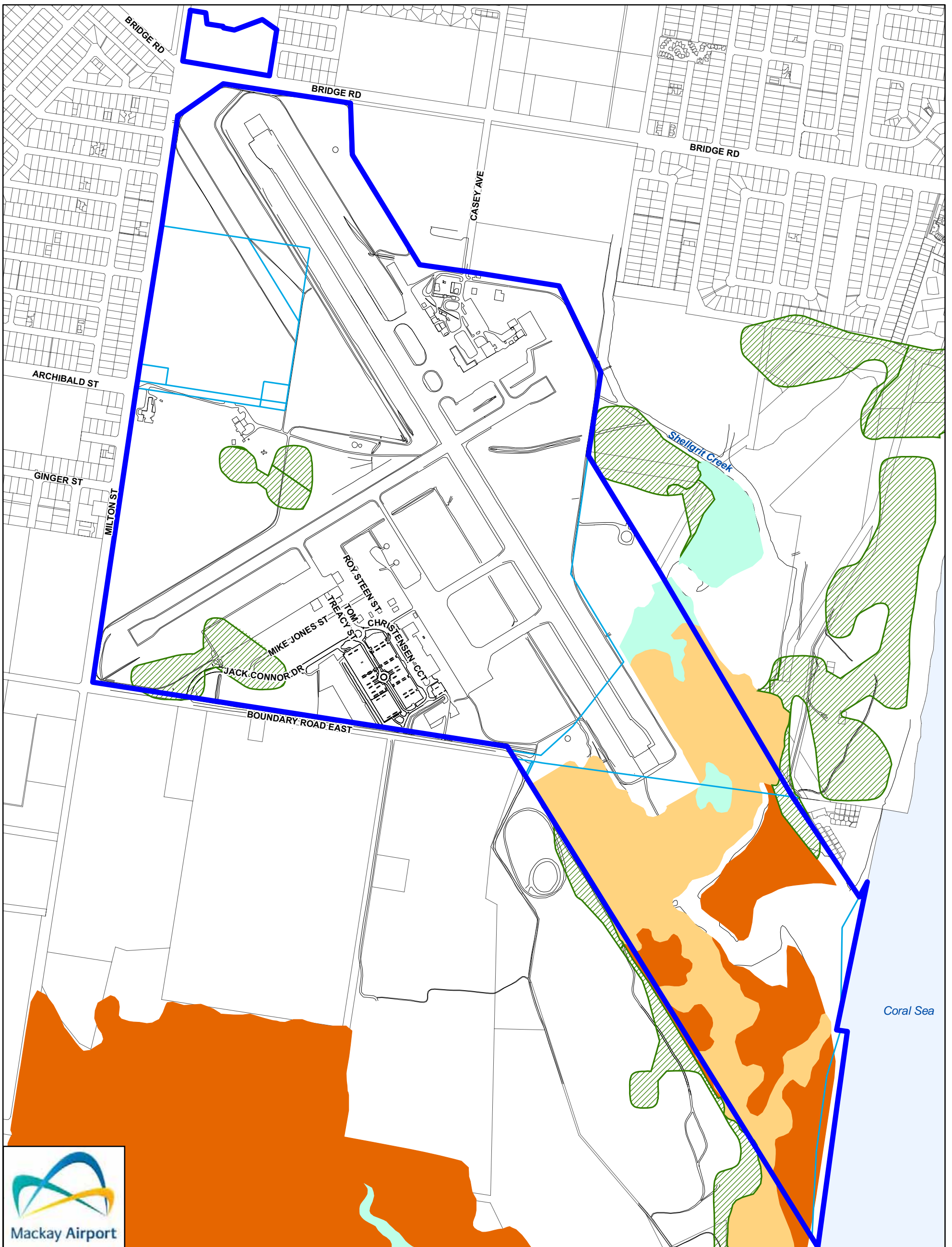
Cadastre

- Airport Boundary
- Airport Lots

Note: Mackay Airport Pty Ltd data set

DATE: 03/11/2010	DATUM: Geocentric Datum of Australia 1994 (GDA94) (Zone 55)	N ↑
SCALE: Approx Scale @ A4 1:15,000		
0 250 500 1,000 Metres		




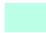


**MACKAY AIRPORT
LAND USE PLAN 2010
ECOLOGICAL VALUES OVERLAY
MAP 5.7(B)**



Maps have been prepared by Mackay Regional Council for Mackay Airport Pty Ltd. This map is and shall remain the property of Mackay Airport Pty Ltd. Using or copying this map or any part of it without specific authorization is absolutely prohibited.


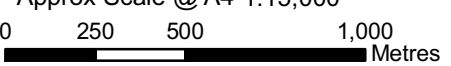
While every care is taken to ensure the accuracy of this product Mackay Airport Pty Ltd makes no representations or warranties about the accuracy, reliability, completeness or suitability for any particular purpose and disclaims all responsibility and all liability (including without limitation, liability in negligence) or all expenses, losses, damages (including indirect or consequential damage) and costs you may incur as a result of this product being inaccurate or incomplete in any way or for any reason.

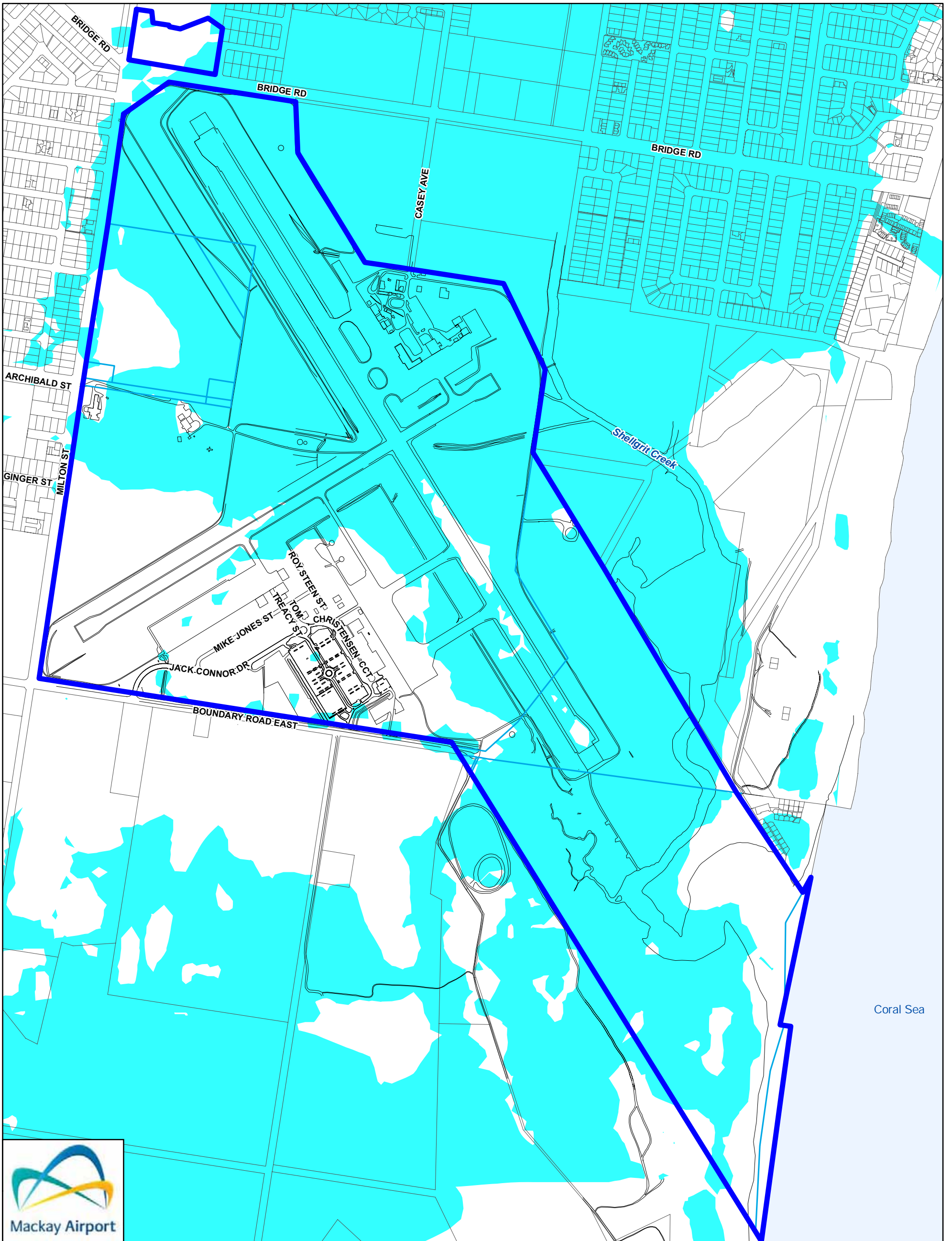
© Copyright Mackay Airport Pty Ltd 2010

- Legend**
-  **Regrowth Vegetation**
 - Remnant Vegetation**
 -  Dominant
 -  Sub-dominant
 -  Remnant 'of least concern'
 - Cadastre**
 -  Airport Boundary
 -  Airport Lots

Regrowth vegetation data describing areas of non-remnant woody vegetation was supplied by DERM from the Vegetation Management Act High Value Regrowth Vegetation Version 2.0 data, Nov 1999.

Remnant Vegetation data was supplied by DERM from the Vegetation Management Act Regional Ecosystems Vers 6.0 – Coastal data, Dec 1999.

DATE: 12/11/2010	DATUM: Geocentric Datum of Australia 1994 (GDA94) (Zone 55)	N 
SCALE: Approx Scale @ A4 1:15,000		
		
MACKAY AIRPORT LAND USE PLAN 2010 ECOLOGICAL VALUES OVERLAY MAP 5.7(C)		



Maps have been prepared by Mackay Regional Council for Mackay Airport Pty Ltd. This map is and shall remain the property of Mackay Airport Pty Ltd. Using or copying this map or any part of it without specific authorization is absolutely prohibited.

While every care is taken to ensure the accuracy of this product Mackay Airport Pty Ltd makes no representations or warranties about the accuracy, reliability, completeness or suitability for any particular purpose and disclaims all responsibility and all liability (including without limitation, liability in negligence) or all expenses, losses, damages (including indirect or consequential damage) and costs you may incur as a result of this product being inaccurate or incomplete in any way or for any reason.

© Copyright Mackay Airport Pty Ltd 2010

Legend

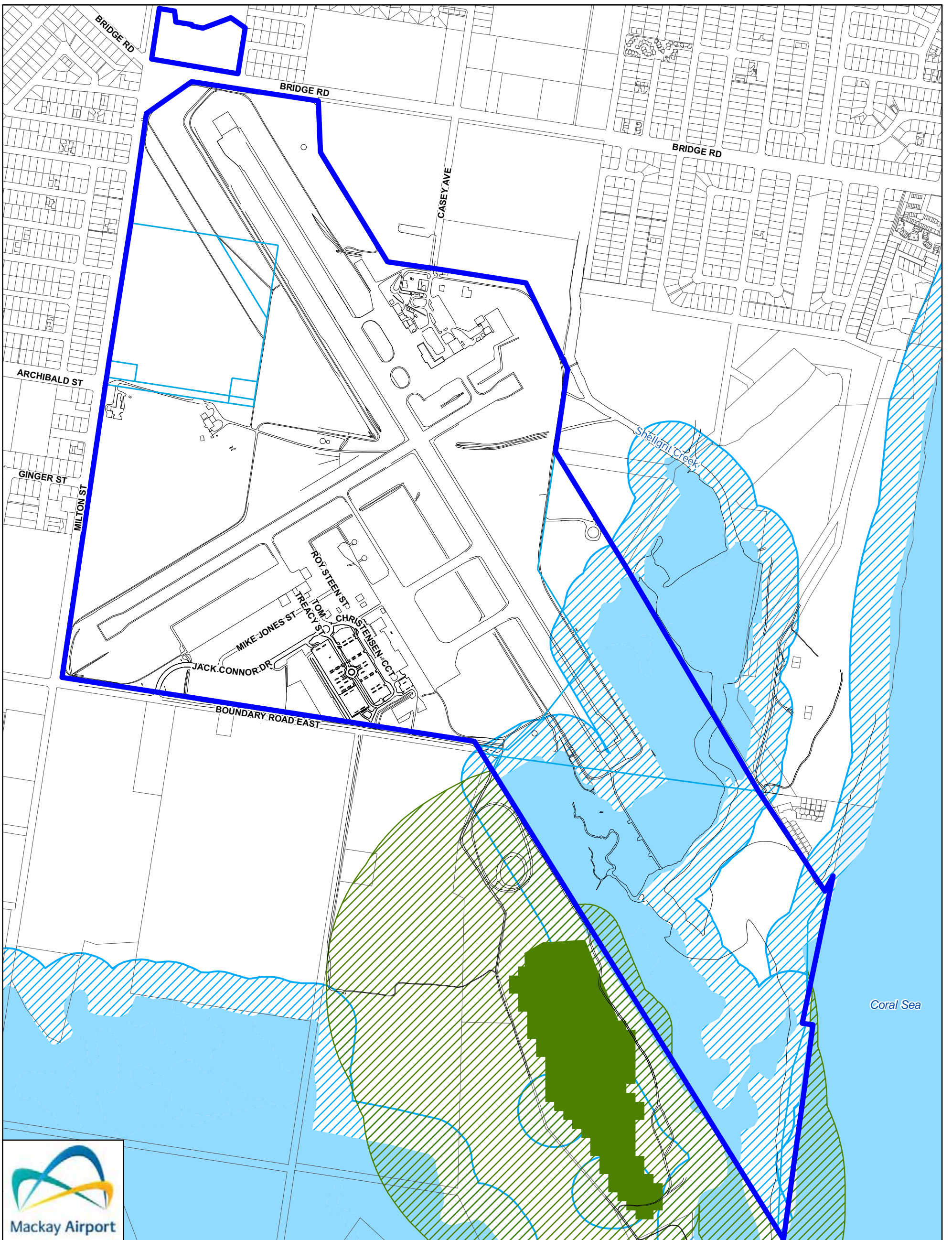
- Riverine Inundation Limits

Riverine flooding data, supplied by Mackay Regional Council is based on 100 year ARI flood levels, compiled from aerial photography taken in 2004.

Cadastre

- Airport Boundary
- Airport Lots

DATE: 04/11/2010	DATUM: Geocentric Datum of Australia 1994 (GDA94) (Zone 55)	N
SCALE: Approx Scale @ A4 1:15,000		
<p>MACKAY AIRPORT LAND USE PLAN 2010 FLOOD/INUNDATION OVERLAY MAP 5.8</p>		



Maps have been prepared by Mackay Regional Council for Mackay Airport Pty Ltd. This map is and shall remain the property of Mackay Airport Pty Ltd. Using or copying this map or any part of it without specific authorization is absolutely prohibited.

While every care is taken to ensure the accuracy of this product Mackay Airport Pty Ltd makes no representations or warranties about the accuracy, reliability, completeness or suitability for any particular purpose and disclaims all responsibility and all liability (including without limitation, liability in negligence) or all expenses, losses, damages (including indirect or consequential damage) and costs you may incur as a result of this product being inaccurate or incomplete in any way or for any reason.

© Copyright Mackay Airport Pty Ltd 2010

GBR Wetland Protection Area

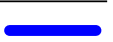

-  Wetland
-  Trigger Area

Wetlands Management Area

-  Wetland
-  Trigger Area

GBR Wetland Protection Area and Wetland Management Area data was supplied by DERM (June 2010). This data is to be used as a guide for planning purposes.

Cadastre

-  Airport Boundary
-  Airport Lots

DATE:
04/11/2010

DATUM:
Geocentric Datum of Australia
1994 (GDA94) (Zone 55)



SCALE:

Approx Scale @ A4 1:15,000

0 250 500 1,000
Metres

**MACKAY AIRPORT
LAND USE PLAN 2010**
GBR WETLANDS OVERLAY
MAP 5.10